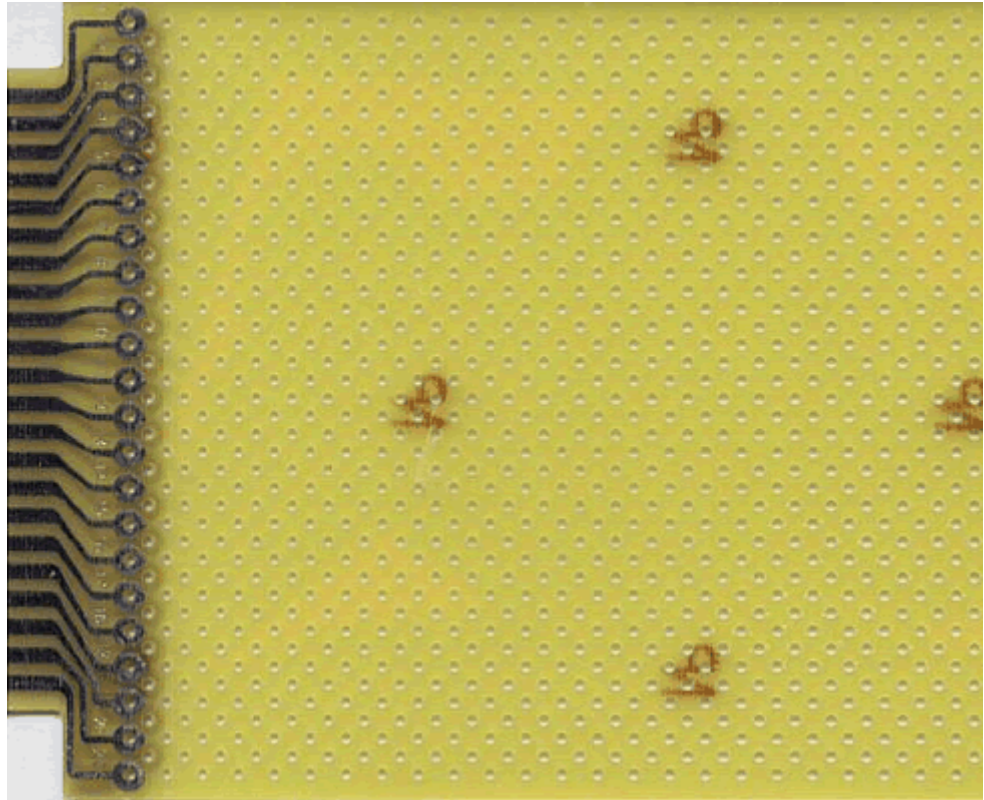


 <b>VECTOR</b> ELECTRONICS & TECHNOLOGY, INC. A Fine Technology Group		 <b>VME VME64X CompactPCI®</b>		
Home	About Vector	Distributors	Sales	Contact Us

## VECTORBOARD® PLUGBOARD™ PART NO. : 838W



### Description :

4.5" X 6.5" X 0.062, Hole Dia.: 0.062" Positioned at alternating intersection of 0.10"  
 Plated Contacts Only  
 Design for mounting transistors  
 44 edge contacts: 22 per side on 0.156" centers tin alloy plated.  
 Unrestricted component placement over entire board surface

<b>Circuit Pattern :</b>	Plated Contacts Only
<b>Contacts :</b>	22/44 @ 0.156" Centers tin alloy plated
<b>16 Pin DIP Capacity :</b>	N/A
<b>Hole Diameter :</b>	0.062" { 1.5748 mm }
<b>Grid :</b>	Alternating intersection of 0.10" grid as " G " Patten
<b>Dimension { H, W, T } :</b>	4.5" X 6.5" X 0.062"
<b>Material :</b>	FR4 Epoxy Glass { MIL - P13949 type Gf }
<b>Wire-Wrap Terminals :</b>	T125, T126
<b>Solder Connector :</b>	R644
<b>Wire-Wrap Socket Pins :</b>	R32

**Wire-Wrap Connector :** R644-3  
**Extender :** 3690  
**Recommended Card Cage:** [CCK 13 Series Card Cage { Subracks }](#)  
**NEMA Grade :** FR4  
**UL Flammability Class :** 94V - 0

email us your requirements : [inquire@vectorelect.com](mailto:inquire@vectorelect.com)

11115 Vanowen St., North Hollywood, CA 91605, USA

Tel.: ( 818 ) 985 8208, ( 800 ) 423 5659; Fax : ( 818 ) 985 7708

**Circbord®**, **Vectorbord®** and **VectorPak®** are registered trademarks of Vector Electronics & Technology, Inc. **CompactPCI®** is a registered trademark of PCIMG. © 2001 Vector Electronics & Technology, Inc. - All rights reserved.